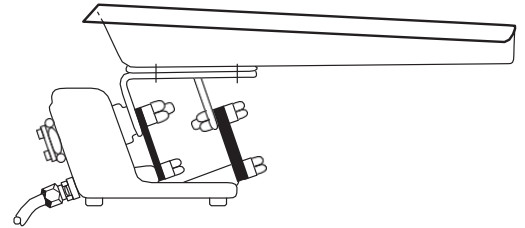
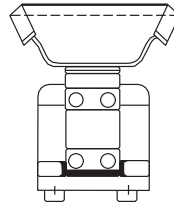




## SPECIFICATIONS/PARTS LIST

# SYNTRON<sup>®</sup> ELECTROMAGNETIC VIBRATORY FEEDER

MODEL: FT01



### ■ OPERATING SPECIFICATIONS

Maximum Trough Weight:

2.7 kg

---

Trough Stroke Range:

Max Amplitude (1.14mm to 1.75mm)

---

Minimum Natural Frequency:

4000VPM (60Hz)  
3750VPM (50Hz)

---

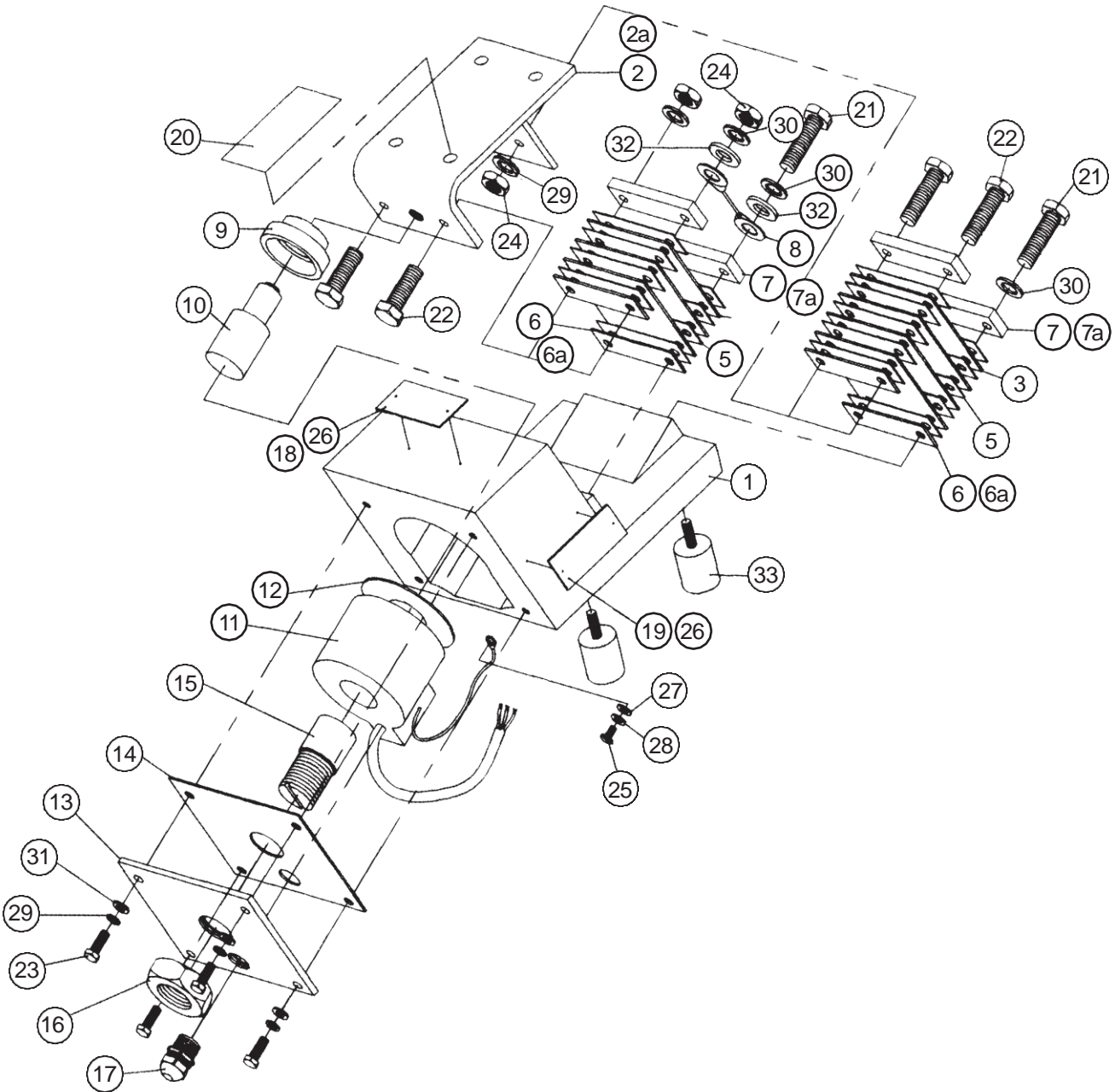
\*Maximum Current Rating:

1.0 Amps (115V/50-60Hz)  
0.5 Amps (230V/50-60Hz)  
7.5 Amps (15v/50Hz)

\*When using a clamp-on meter to read the current of the feeder, the meter reading must be multiplied by a value of 1.7. A clamp-on meter does not reveal the same reading as stamped on the name plate due to the wave form characteristics of the feeder, when operating. Therefore the 1.7 multiplier must be used. All current readings must be taken at the controller.

## ■ TORQUE SPECIFICATIONS

ITEM	DRY	LUBRICATED
21,22	29.2 ft/lbs (39.6 Nm)	21.38ft/lbs (29 Nm)



**Note: DO NOT REMOVE OR PAINT OVER SAFETY LABELS OR NAME PLATE. SHOULD SAFETY LABELS REQUIRE REPLACEMENT, CONTACT RILEY AUTOMATION LTD.**

## PARTS LIST – FT01

Item	Part No.	Description	Quantity
1	FVTA2002/1	Base Casting	1
2	FVTA2007/2	Trough Mounting Bracket M10 (aluminium)	1
2a	FVTA2007/6	Trough Mounting Bracket M10 (anodised aluminium)	1
3 & 4	FVTA2011/**	Leaf Spring M10 ** See table on next page for spring variants	1
5	FVTA2008/5	Leaf Spring Spacer M10	18
6	FVTA2008/7	Leaf Spring Seat M10 (Nickel plated)	4
6a	FVTA2008/10	Leaf Spring Seat M10 (Stainless Steel)	4
7	FVTA2009/2	Leaf Spring Clamping Bar M10 (Nickel plated)	4
7a	FVTA4052/2	Leaf Spring Clamping Bar M10 (Stainless Steel)	4
8	FVSS4090/2	Earth Strap	1
9	FVST2001/4	Dust Seal	1
10	FVTA2005/1	Armature	1
11	FVTA4004/**	Encapsulated Coil ** See table on next page for coil variants.	1
12	FVST2005/3	Coil Washers (2 x 1.5mm, 1 x 1.0mm)	1
13	FVTA2004/1	Backplate	1
14	FVTA2012/1	Backplate Gasket	1
15	FVTA2003/2	Core	1
16	FVST2010/2	5/8" BSP Locknut	1
17	29265-164-3	16mm Nylon Cable Gland	1
18	UNNA4008/1	Electrical Warning Label	1
19	UNN4049/1	Nameplate	1
20	UNNA4010/1	Warning Label	1
21		M10 x 35 Hexagon Head Setscrew	4
22		M10 x 40 Hexagon Head Setscrew	4
23		M6 x 20 Hexagon Head Setscrew	4
24		M10 Hexagon Nut	4
25		M4 x 10 PSDV Pan Head Brass Screw	1
26		Hammer Drive Rivet Head Screw 00 x 1/4"	4
27		M4 Plain Brass Washer	1
28		M4 Spring Washer	1
29		M6 Spring Washer	4
30		M10 Spring Washer	8
31		M6 Plain Washer	4
32		M10 Plain Washer	2
33	FVSX 4265/1	M6 Male/Female Rubber Feet	4



Riley p/no.	Description	Voltage	Frequency
FVTA4004/1	FT01 Encapsulated Coil (standard)	230v	50/60Hz
FVTA4004/2	FT01 Encapsulated Coil (standard)	110v	50/60Hz
FVTA4004/4	FT01 Open-Wound Coil	230v	50/60Hz
FVTA4004/5	FT01 Encapsulated Coil (ATEX Zone 22)	15v	50Hz
FVTA4004/6	FT01 Encapsulated Coil (15v spec)	15v	50Hz
FVTA4004/7	FT01 Encapsulated Coil (armoured cable)	230v	50/60Hz

If you are unsure which variant you require, please have the serial number of the drive unit to hand and contact Riley Automation on 01332 275850. If the nameplate has been removed, the internal coil will have a label on it. The backplate will need to be removed to find it through this method.

Riley p/no.	Description	Thickness (mm)
FVTA2011/4	FT01 HiFlex Leaf Spring 5ply (red)	1.25
FVTA2011/5	FT01 HiFlex Leaf Spring 7ply (blue)	1.75
FVTA2011/6	FT01 HiFlex Leaf Spring 9ply (green)	2.25
FVTA2011/7	FT01 HiFlex Leaf Spring 11ply (black)	2.75
FVTA2011/9	FT01 HiFlex Leaf Spring 6ply (white)	1.50
LF0973/1	FT01 Carbon Fibre Leaf Spring 5ply	1.20
LF0973/2	FT01 Carbon Fibre Leaf Spring 4ply	0.90
LF0973/3	FT01 Carbon Fibre Leaf Spring 4.5ply	1.00
LF0973/4	FT01 Carbon Fibre Leaf Spring	0.75

Our HiFlex composite springs are colour coded, their respective colours are broken down in the table above. All of the carbon springs are black but we can identify the spring configuration on your unit if you share the serial number with us.

Riley Automation Ltd  
 Foresters Business Park  
 Sinfin Lane  
 Derby DE23 8AG England  
**Tel: 01332 275850**

Riley Automation Ltd reserves the right to alter at any time, without notice and without liability or other obligation on its part, materials, equipment specifications and models. Riley Automation Ltd also reserves the right to discontinue the manufacture of models, parts and components thereof.